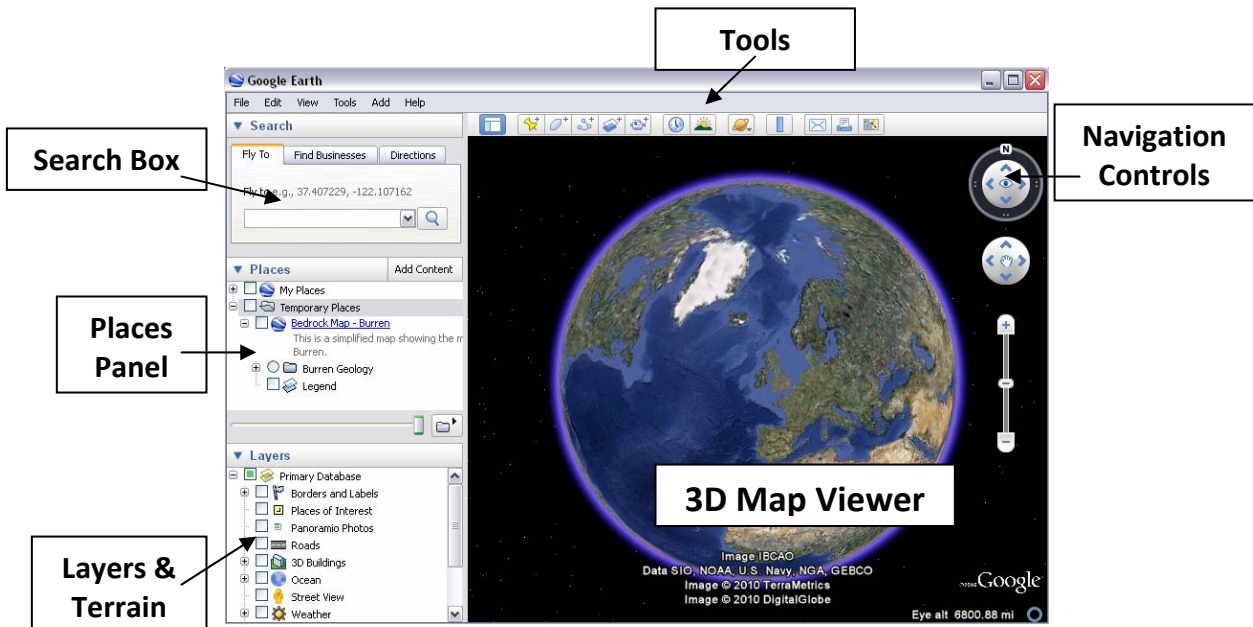


Google Earth: User Manual

User Manual compiled by Ronán Hennessy

Download Google Earth: <http://earth.google.com>

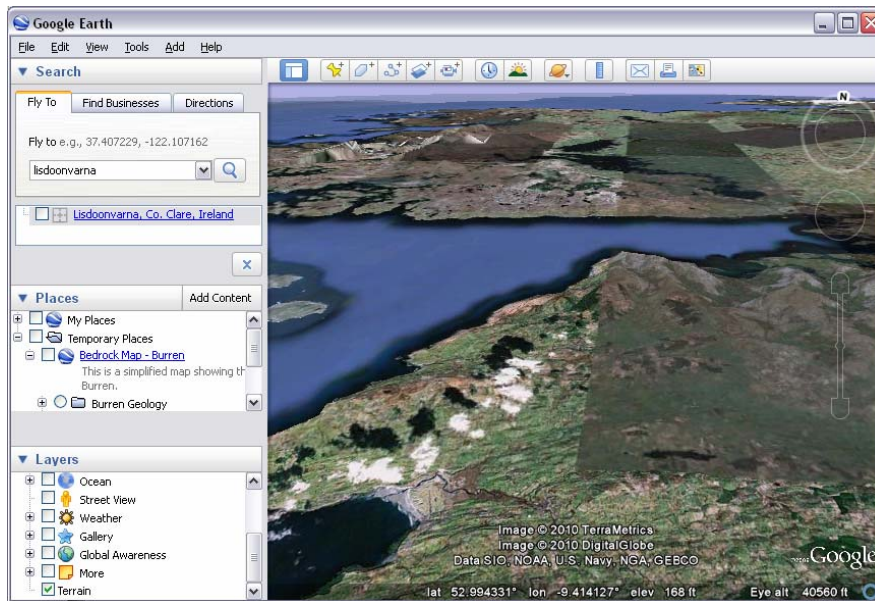


1. Click the **north-up** button to reset the view so that north is at the top of the screen. Click and drag the ring to rotate your view.
2. Use the **Look** joystick to look around from a single vantage point, as if you were **turning your head**. Click an arrow to look in that direction or continue to press down on the mouse button to change your view. After clicking an arrow, move the mouse around on the joystick to change the direction of motion.
3. Use the **Move** joystick to move your position from one place to another. Click an arrow to look in that direction or continue to press down on the mouse button to change your view. After clicking an arrow, move the mouse around on the joystick to change the direction of motion.
4. Use the **zoom slider** to zoom in or out (+ to zoom in, - to zoom out) or click the icons at the end of the slider. As you move closer to the ground, Google Earth swoops (tilts) to change your viewing angle to be parallel to the Earth's surface. You can turn off this automatic tilt (Tools > Options > Navigation > Navigation controls; Mac: Google Earth > Preferences > Navigation > Navigation controls).



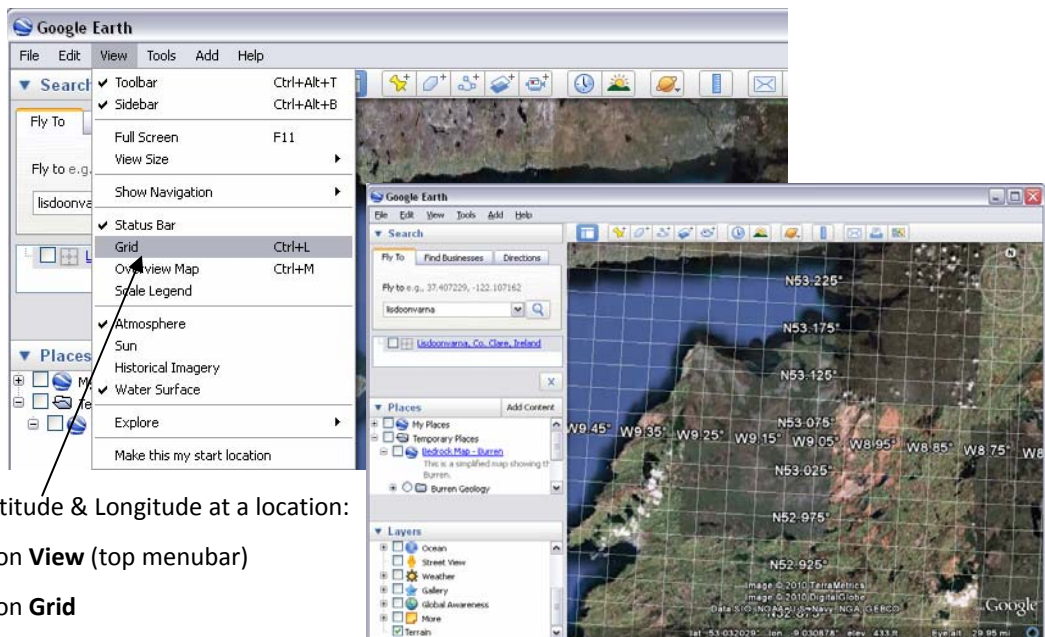
(See also: <http://earth.google.com/support/bin/static.py?page=guide.cs&guide=22358&topic=22361>)

Viewing 3D Terrain in Google Earth:



- To turn on the 3D terrain in Google Earth click on the **Terrain Box** in the **Layers panel** (lower left corner)

Viewing the Latitude & Longitude Grid in Google Earth:



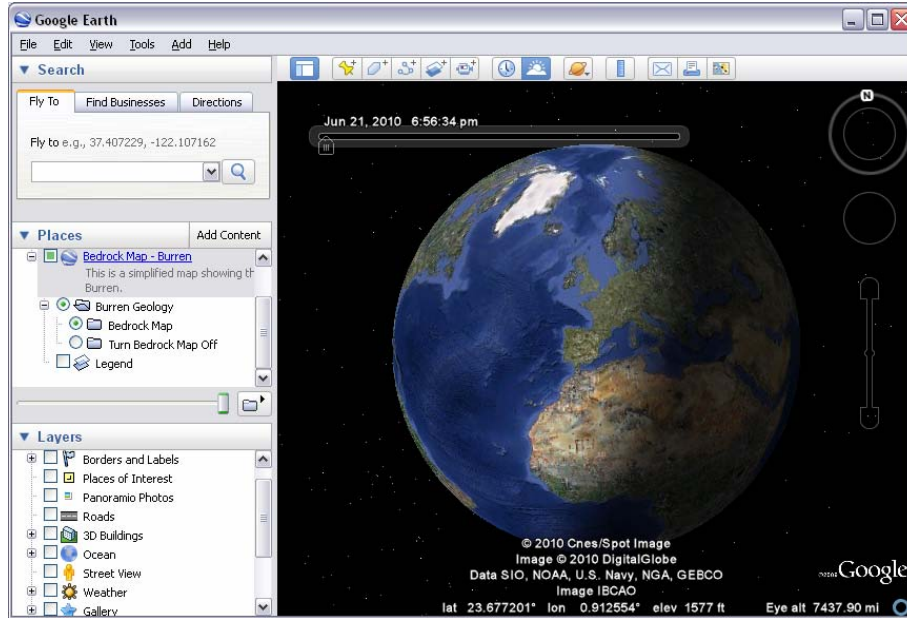
To view the Latitude & Longitude at a location:

- Click on **View** (top menu bar)
- Click on **Grid**

Viewing Global Sunlight in Google Earth:

To view the where the Sun is shining at a given time or date:

- Click on **View** (top menubar)
- Click on **Sun** (and zoom out so you can see the entire globe)

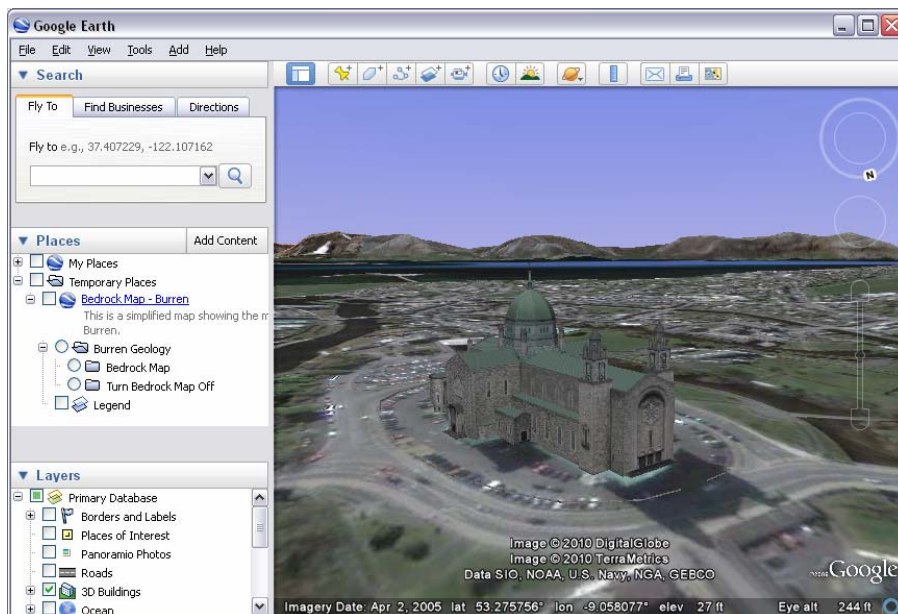


Sunlight mode in Google Earth

Viewing 3D Buildings in Google Earth:

3D buildings have been added to some town and cities in Google:

- Click on **3D buildings** in the Layers panel - Search for a town or city in the Search Panel e.g. Galway, Dublin, London



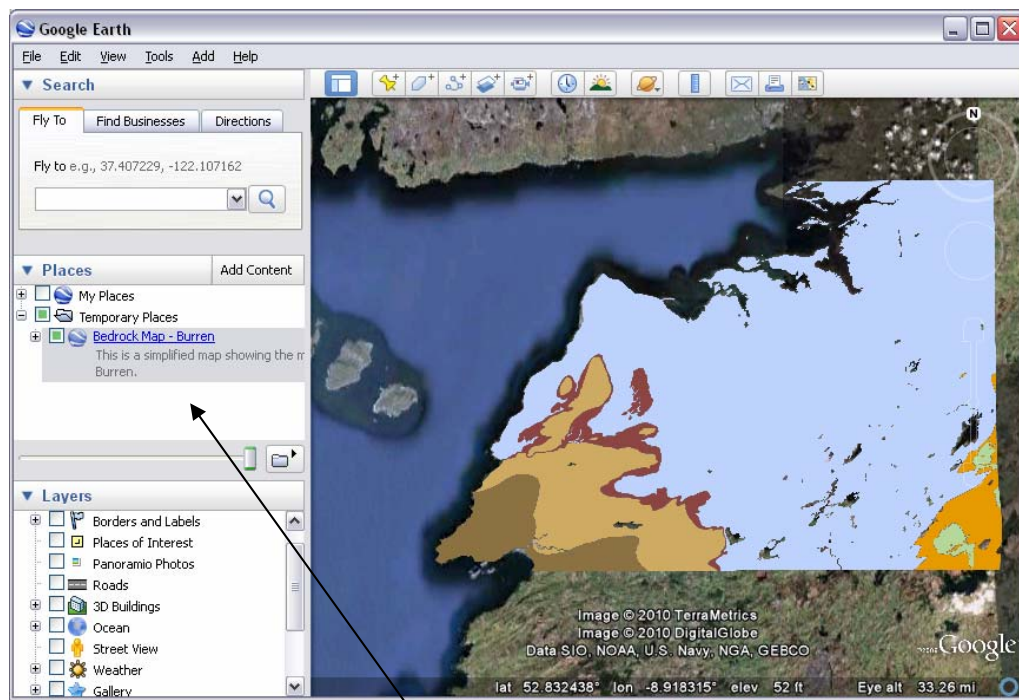
Galway Cathedral in 3D in Google Earth – Burren Hills in the background across Galway Bay

Viewing Burren Maps in Google Earth:

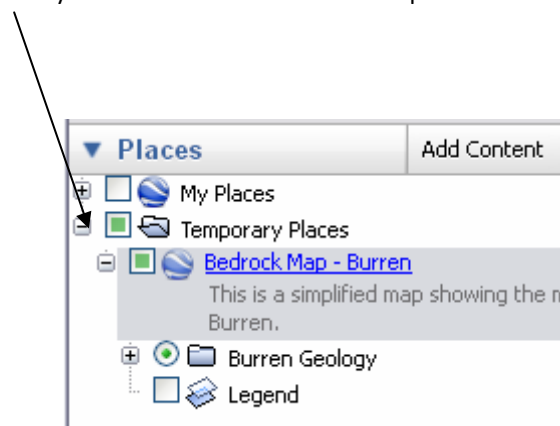
For this example we will use the *Burren Geology Bedrock Map*. (see www.GeoNeed.org for Google Earth GIS Burren files)

To view a map of the **Burren** in Google Earth:

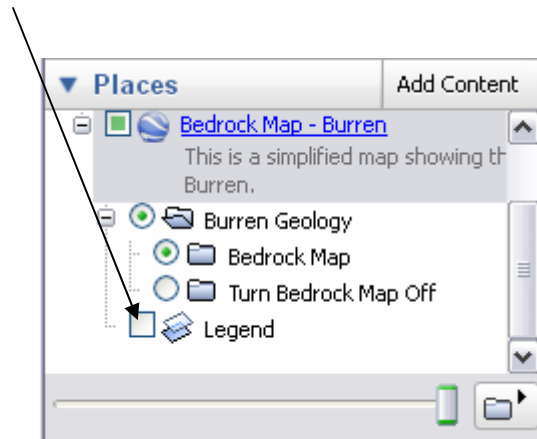
- Click on the Google Earth KMZ/KML file
- This file is automatically loaded in Google Earth



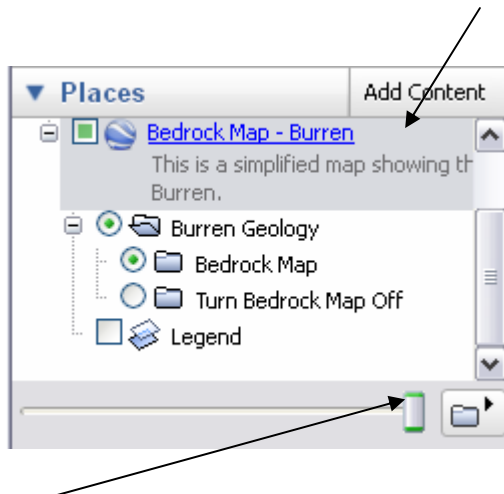
- You will see the file listed in the **Places Panel** (left side of 3D Map Viewer)
- Click on the **Plus** symbol beside the file name to expand the file



- Click on the **Legend** to see what the different colours on the map relate to



- To map the map in the 3D Map Viewer transparent (see through), click on the Bedrock Map – Burren filename in the Places panel so that it is highlighted in **grey**



- Drag the **Transparency slider** to make the map layer **fade in and out**

